

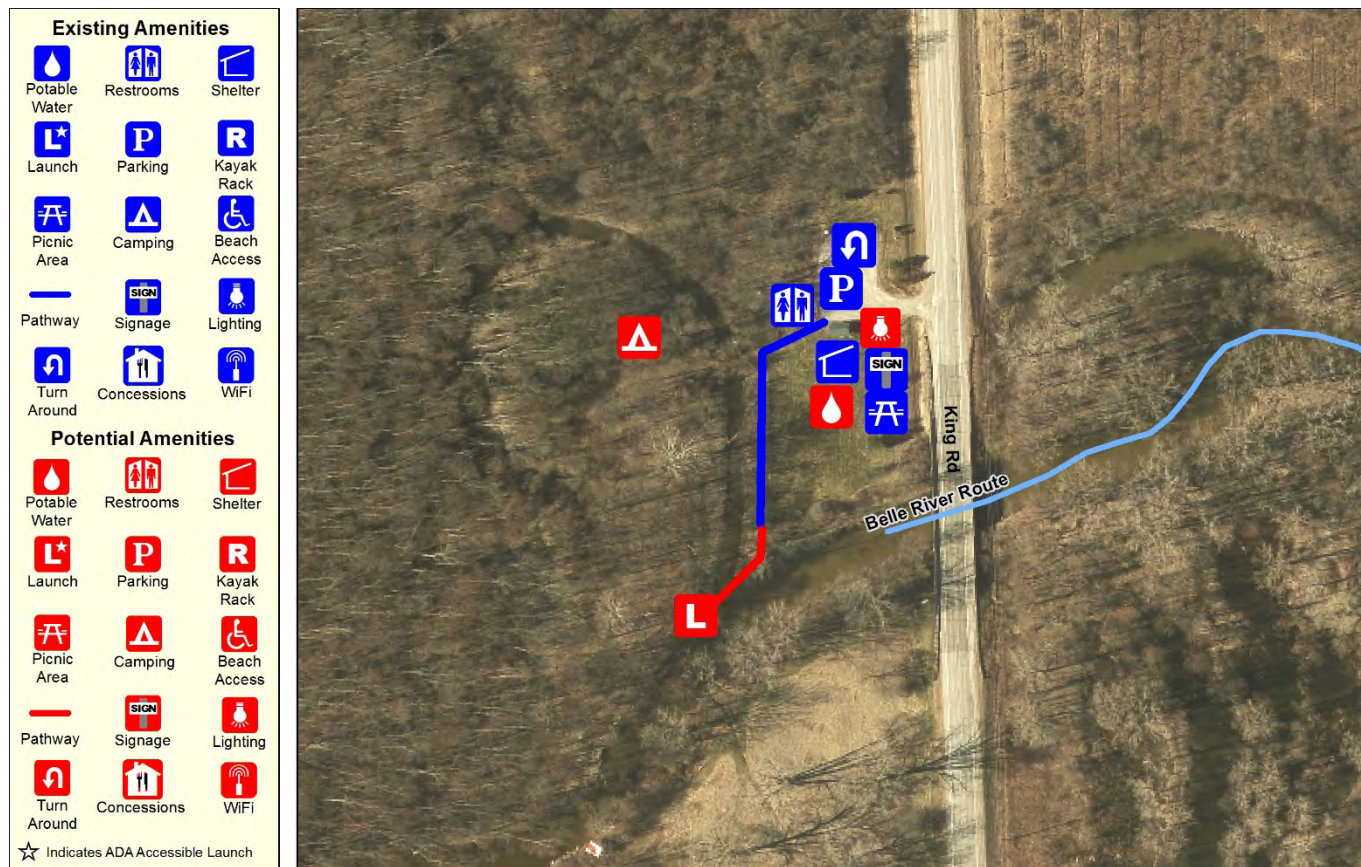
SITE 32 – CHINA TOWNSHIP PARK AT KING ROAD TRAILHEAD

Site Description

This park in China Township provides access to the Belle River and the Belle River Route. The park has a gravel parking lot surrounded by a large grassy area. There is a pavilion with benches next to a flagstone patio outfitted with fire pits. All of the infrastructure at this site has an artistic flair. There is a steep slope to access the river, at which point the water is relatively deep.

Potential Improvements

The park's pathway to the water should be improved to make access easier. The site should also have vault toilets and a water bottle filler. The forested area within the park would also be conducive to camping.



China Township Park at King Rd

