

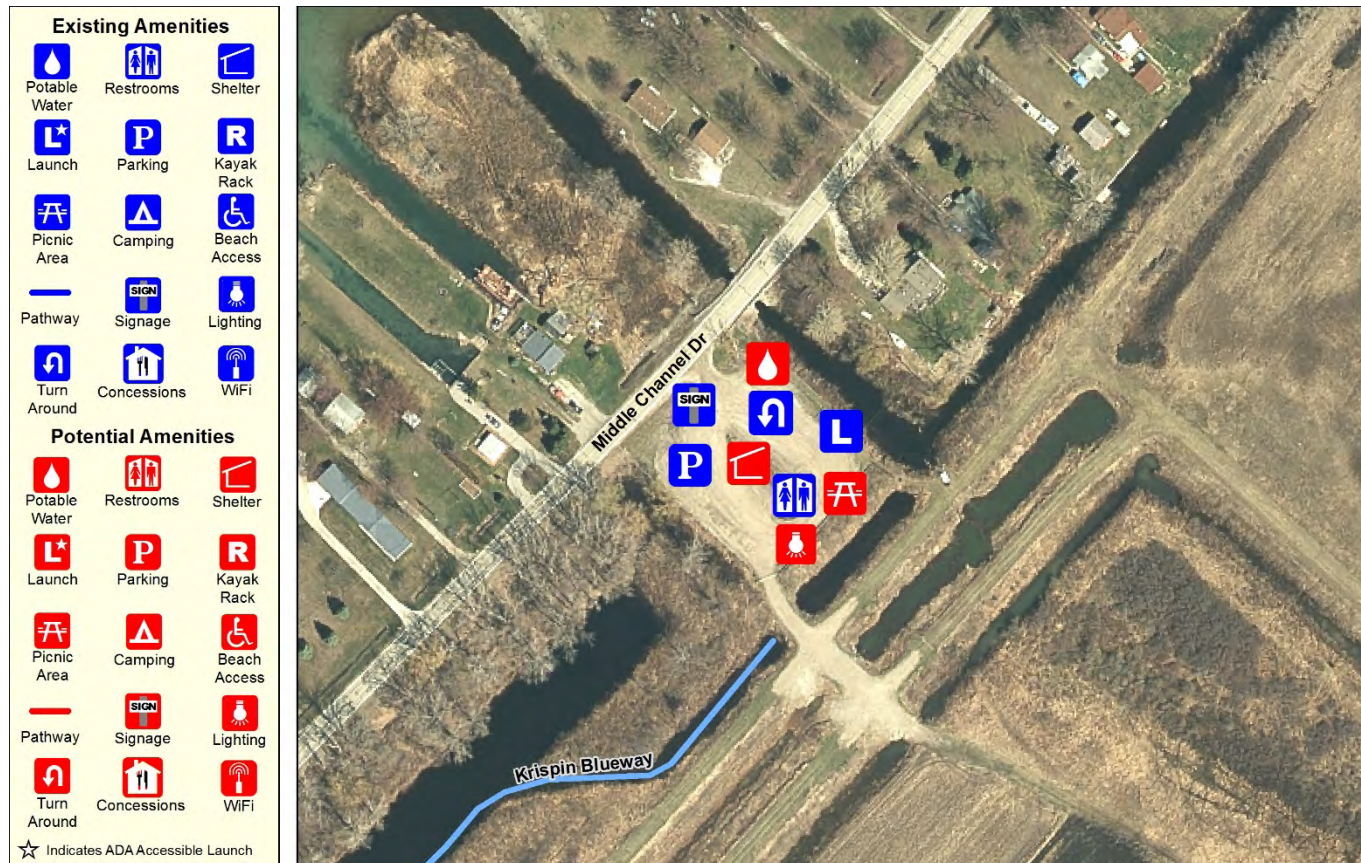
## SITE 34 – DNR ACCESS AMES SECONDARY ACCESS SITE

### Site Description

This access point is located on the northwest side of Harsens Island and connects to both the Middle Channel of the St. Clair River and the Krispin Blueway. The Middle Channel can be reached by launching at the ramp and paddling under the bridge. The Krispin Blueway can be accessed from the site's southern edge. This is a basic launch site with very few amenities aside from restrooms and gravel parking. Due to its low elevation, this site experiences periodic flooding.

### Potential Improvements

This site should be improved by adding potable water, a shelter, picnic tables and lighting.



DNR Access Ames

